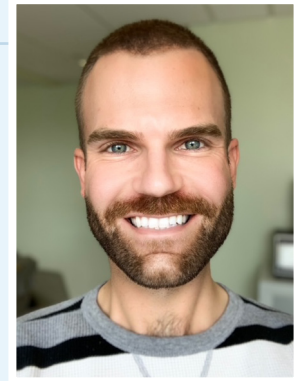


GET TO KNOW OUR *Social Work Team*

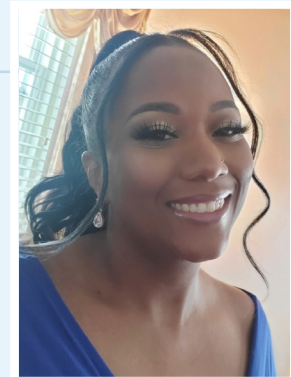
Gene Strehl

Gene has been a member of the social services team at Germantown Home since 2018 and feels that Germantown Home provides a level of care that is superior to facilities where he has worked in the past. His favorite quality about Germantown Home is the sense of family and support among the staff that helps provide residents with a high quality of life. Gene is proud to be working within the NewCourtland Network and helping people of various cultures and backgrounds from our community by providing services to improve their overall wellbeing.



Shalise Naylor

Shalise joined the Germantown Home team in 2019 and has been a Social Worker, specializing in the geriatric population, for over 10 years, with 5 years experience as a Director. She came to the NewCourtland Network with vast experience in care coordination, short term therapy and resource acquisition. Shalise is thrilled that she is able to continue providing advocacy and maintaining quality care for the residents of Germantown Home.



Julianne Sexton

Julianne has been a Social Worker at Germantown Home for the last 2 years. She earned her Bachelor's and Master's Degree at West Chester University, where she found her passion for working with older adults and their families. Her career is dedicated to being an advocate for residents and being a part of the team that is the Germantown Home staff. Julianne looks forward to being a part of the future of NewCourtland and the services the Network provides for the older adult population in Philadelphia.

